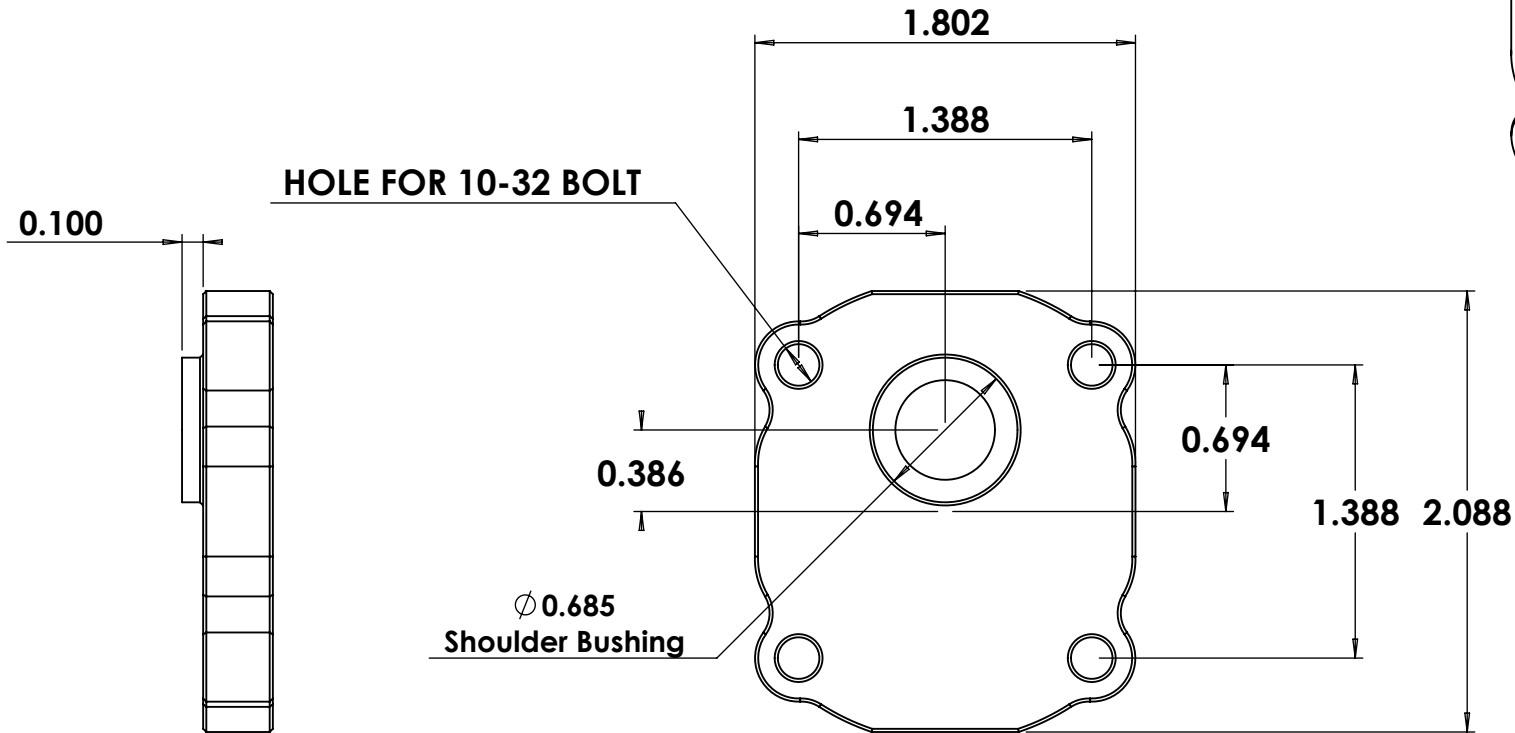
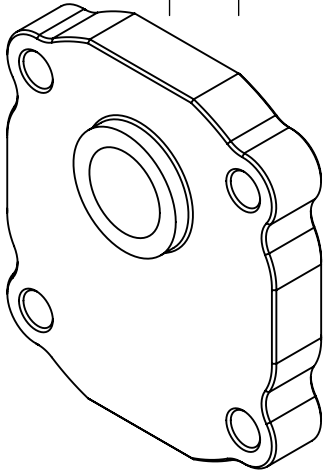


		REVISIONS			
ZONE	REV.	DESCRIPTION		DATE	APPROVED



NOTES:

1. DRIVE SHAFT .472" DIAMETER (12MM)
2. .372" - .373" Hex Shaft
3. SHAFT LENGTH FROM FACE OF PUMP:
.870" (SPEEDWAY ENG)
1.070" (TIGER)

PROPRIETARY AND CONFIDENTIAL
THE INFORMATION CONTAINED IN THIS DRAWING IS THE SOLE PROPERTY OF RACELINE OIL PUMPS. ANY REPRODUCTION IN PART OR AS A WHOLE WITHOUT THE WRITTEN PERMISSION OF RACELINE OIL PUMPS IS PROHIBITED.

		DIMENSIONS ARE IN INCHES TOLERANCES: FRACTIONAL ± ANGULAR: MACH ± BEND ± TWO PLACE DECIMAL ± THREE PLACE DECIMAL ±	NAME	DATE	RACELINE OIL PUMPS
		MATERIAL --	DRAWN		
		FINISH --	CHECKED		Rear End Pump Bolt Pattern
			ENG APPR.		
			MFG APPR.		
			Q.A.		
NEXT ASSY	USED ON		COMMENTS:		SIZE A
APPLICATION		DO NOT SCALE DRAWING			DWG. NO.
					SCALE: 1:1
					WEIGHT:
					SHEET 1 OF 1