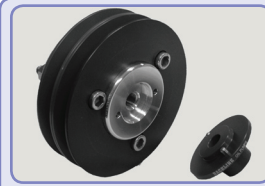


Pulleys and Drives By



Pulley Adapter

30AP-1000 1" Diameter
30AP-1125 1.125" Diameter



Adapt your conventional small-tooth crank pulleys to a two-pin drive mandrel with our new pulley adapter system.



3-Bolt SBC Mandrels (Requires Balancer Washer)

30MS1000-4 1" Dia., 4" Long
30MS1000-5 1" Dia., 5" Long
30MS1125-4 1.125" Dia., 4" Long
30MS1125-5 1.125" Dia., 5" Long



Guide Washers

30W2625-1000 Guide Washer, 1" ID
30W2625-1125 Guide Washer, 1.125"



BALANCER WASHER

(For 3-Bolt SBC Mandrels)

30WB-1242-S



Hat Washers

30WA-1000 1" Dia., Aluminum
30WA-1125 1.125" Dia. Aluminum
30WS-1000 1" Dia., Stainless
30WS-1125 1.125" Dia., Stainless



3-Bolt BBC Mandrels

30MB1000-4 1" Dia., 4" Long
30MB1000-5 1" Dia., 5" Long
30MB1125-4 1.125" Dia., 4" Long
30MB1125-5 1.125" Dia., 5" Long



3-Bolt Ford Mandrels

30MF1000-4 1" Dia., 4" Long
30MF1000-5 1" Dia., 5" Long
30MF1125-4 1.125" Dia., 4" Long
30MF1125-5 1.125" Dia., 5" Long



Hex Hat Washers

30NA-1000-1 1" Dia. Counterbore
30NA-1000-2 1" Dia. Pin Drive
30NA-1125-1 1.125" Dia. Counterbore
30NA-1125-2 1.125" Dia. Pin Drive



Conventional Mandrels

30M1000-4 1" Dia., 4" Long
30M1000-5 1" Dia., 4" Long
30M1125-4 1.125" Dia., 4" Long
30M1125-5 1.125" Dia., 5" Long

1" ID HTD

30H1000-17	17 Tooth
30H1000-18	18 Tooth
30H1000-19	19 Tooth
30H1000-20	20 Tooth
30H1000-21	21 Tooth
30H1000-22	22 Tooth
30H1000-23	23 Tooth
30H1000-24	24 Tooth
30H1000-25	25 Tooth



Crank Pulleys - 8mm

1.125" ID HTD

30H1125-17	17 Tooth
30H1125-18	18 Tooth
30H1125-19	19 Tooth
30H1125-20	20 Tooth
30H1125-21	21 Tooth
30H1125-22	22 Tooth
30H1125-23	23 Tooth
30H1125-24	24 Tooth
30H1125-25	25 Tooth

Standard - HTD

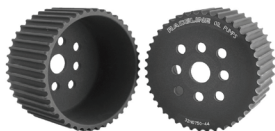
31H0625-32	32 Tooth
31H0625-35	35 Tooth
31H0625-36	36 Tooth
31H0625-37	37 Tooth
31H0625-38	38 Tooth
31H0625-39	39 Tooth
31H0625-40	40 Tooth



Oil Pump Pulleys - 8mm

With Belt Guard - HTD

31H0625-32G	32 Tooth
31H0625-35G	35 Tooth
31H0625-36G	36 Tooth
31H0625-37G	37 Tooth
31H0625-38G	38 Tooth
31H0625-39G	39 Tooth
31H0625-40G	40 Tooth



Water Pump Pulleys 8mm

32H0750-35	35 Tooth
32H0750-37	37 Tooth
32H0750-42	42 Tooth
32H0750-44	44 Tooth

Raceline belt guards are integrated with the pulley. **No bolts or press-fit required.**

Raceline pulleys are hard anodized for superior wear resistance.



Alternator Pulleys 8mm

33H0590-24	24 Tooth, .590" ID
33H0590-32	32 Tooth, .590" ID
33H0669-24	24 Tooth, .669" ID
33H0669-32	32 Tooth, .669" ID



HTD 8MM Belts

10MM

4808M10
5608M10
6008M10
6088M10
6328M10
6408M10
6568M10
6808M10
7208M10
8008M10

20MM

4808M20
5608M20
6008M20
6088M20
6328M20
6408M20
6568M20
6808M20
7208M20
8008M20

Tech Tip

Raceline recommends the HTD system because it was designed to output constant speed. There is no slippage to cause speed variations because the belt meshes smoothly with the pulley grooves. The load is carried evenly over the whole tooth to deliver a smooth, continuous flow of power.

We also offer Gilmer pulleys and belts. Call for sizes.



Gilmer Belts

3/8 Pitch - 1" Wide

210L100	21.0" Long
225L100	22.5" Long
255L100	25.5" Long
270L100	27.0" Long
285L100	28.5" Long
300L100	30.0" Long

4920 Highway 70W
Eagle River, WI 54521
1-800-RACELINE (722-3546)
Fax (715) 479-1629



www.racelinepumps.com